

INSIDE	
President's Corner	2
OTLPOA Mission Statement	2
OTLPOA Officers	2
Membership Application	3
OTLPOA Purpose & Activities	3
OTLPOA Board Meeting Minutes	4
Updated Fishing Regulations	5
OTC-COLA	6
OTC Dock & Lift Registration	7
Shopping for Trees	8
How to Get Rid of Mosquitos	9
Swimming Lessons	10
Calendar of Events	11
Land Transfers	12
Don't Forget About the Basics	13
Aquatic Invasive Specieess	14
Church Directory	14
Glendalough State Park Info	15

Walk for Glendalough Fundraiser Donation



Roger Anderson presenting our donation to the Walk for Glendalough fundraiser.

The Annual Fundraising Event walk for Glendlough was held on April 21st this year. We donate \$500 per year to this fundraiser, which is now in it's 25 year.

The Glendalough State Park Citizens Advisory Board hosted the Park's annual fundraiser, now in its 25th year! The Walk for Glendalough has lead to many exciting projects and updates, thanks to the generous contributions and efforts from businesses, private donors, volunteers, and walk participants. All money raised for this event goes directly to park projects.

Please consider contributing to the Walk for Glendalough event to allow Park Partners to continue to fund many beneficial amenities and projects at the Park; the kinds of which are not able to be funded from the MN DNR park system. You can contribute by:

- Becoming a member of Park Partners, where you not only support Glendalough, but will receive quarterly issues of the park newsletter, Tracks and Trails.
- Renew your membership to Park Partners. Please consider increasing your donation to support more improvements in the park.
- Make a monetary donation to Park Partners.
- Participate in the Walk for Glendalough next year!

Send checks (and pledge forms) to:
Glendalough Park Partners P.O. Box 901
Battle Lake, MN 56515

PSRST STD
U.S. POSTAGE
PAID
PERMIT NO. 22
SLAYTON, MN



Zebra Mussels

Together WE Can Prevent the Spread of AQUATIC INVASIVE SPECIES

All docks and lifts must be dried for **21** days before moving to another body of water.



BUYING OR SELLING A USED DOCK OF LIFT?

To comply with the Otter Tail County Dock and Riparian Use Ordinance, a dock, pier, wharf, or boatlift must be registered with the Otter Tail County Land & Resource Management Office before being moved from one body of water to another.

Registration is free and easy.



OTLPOA MEMBERSHIP RENEWALS HAVE BEEN MAILED!

If you do not receive a renewal form you are encouraged to let us know immediately. Renewal forms can be found on page 3 please fill out and mail to
PO Box 21, Battle Lake, MN 56515 or you can visit
www.OTLPOA.com and under the membership section pay online.

President's Corner



*Roger Anderson
OTLPOA President*

It has been a very cool spring so far, but warmer weather is (hopefully) coming soon!

Lake activity is apparent as most owners are getting their docks, boatlifts, boats, and pontoons into the water. Please make sure that your watercraft is clean even though you are just taking them out of storage. For those of you who have enjoyed some early pan fishing or just cruising the lakes make sure you are mindful of draining and cleaning your watercraft as you move from lake to lake.

Our association does not generally take a political position; however, it appears that our legislation has combined several bills together into one bill, the "House and Senate Environmental Bill." One portion of this bill is the funding of the Minnesota Aquatic Invasive Species Research Center. We are all affected if this portion of the bill is not passed. MAISRC works closely with all lakes and rivers associations to educate and combat invasive species. This funding is critical in our fight to keep lakes and waterways clean. I encourage you all

to contact your legislators to learn more about this bill and to encourage a compromise to get this portion of the bill passed. Go to <https://www.house.gov/representatives/find-your-representative> to find your local legislator and contact information.

Please plan to attend our Annual Meeting on Saturday, June 26. Meg Duhr, Outreach Specialist for the Minnesota Aquatic Invasive Species Research Center will update all of us on programs and initiatives throughout the state.

The 73rd Minnesota Governor's Fishing Opener will be held May 13-15 on Ottertail Lake. Please check out their website at www.mngovernorsopener.com to get updates and information.

As the weather warms up and your lake activities increase, please be good stewards of our lakes and rivers. Now, go have some fun.



OTLPOA Mission Statement

The object and purpose of this corporation shall be to promote the community welfare and civic development of all areas of Otter Tail County bordering on or approximate to the shoreline of Otter Tail Lake and such other land areas further removed therefrom as its members shall from time to time determine, and to assist the property owners within said area in the preservation of their civic areas and those of Otter Tail Lake itself, including the planting and promulgation of fish therein and the protection and preservation of wildlife on the land areas adjacent to Otter Tail Lake as may be determined by the members, to promote and develop the horticultural development of the areas described, to promote the cultural and social lives of the inhabitants of said area and to provide a vehicle by which legal or political problems common to the areas and the inhabitants thereof, including tax problems, may be resolved in any manner provided by law for the common welfare of the members of this corporation; and to that and this corporation may acquire by purchase or other means such real or personal property as may be necessary in carrying out its stated objectives and to mortgage or sell or exchange the same and to do any and all other acts permitted by the laws of the State of Minnesota in furtherance of its stated purposes.

OTLPOA OFFICERS

President: Roger Anderson

651.301.3616, roger.anderson0515@yahoo.com

Vice President: Rob Bope, 612.889.8771, hedg@aol.com

Secretary: Becky Kemling, secretary@otlpoa.com

218.371.9095, beckykemling@msn.com

Treasurer: Pat Hunke, 218.639.4910, phunke@hunkestransfer.com

Directors:

Blanche Lake

Fred Rizk, frizk@aol.com, 701.635.6477

Ken Wentz, kmwmjw@gmail.com, 760.885.9668

Long Lake

Lynn Cave, iasewtaquilter@gmail.com, 641.373.6021

Deer Lake

Stan Feters, sfeters@prtcl.com, 218.495.2324

Round Lake

Steve Mouritsen, steve.mouritsen@wellsfargo.com, 612.237.6927

Ottertail River North

Becky Kemling, beckykemling@msn.com, 218.371.9095

Walker Lake

Gary Overturf, garyoverturf@msn.com, 651.686.5807

Otter Tail Lake

Roger Anderson, roger.anderson0515@yahoo.com, 651.301.3616

Rob Bope, hedg@aol.com, 612.889.8771

Tom Gedde, tomgedde1@icloud.com, 612.867.5610

Eric Gerken, egerken31@gmail.com, 320.491.1277

Pat Hunke, phunke@hunkestransfer.com, 218.639.4910

Debbie Ness, deb@yourresort.com, 218.495.2468

Scott Simdorn, scottsimdorn58@gmail.com, 701.640.1572

Linda Snyder, whip56520@yahoo.com, 701.367.9956

VISIT OUR WEBSITE:

www.otlpoa.com



Otter Tail Lakes Property Owners Association, Inc.

Serving Otter Tail Lake, Long Lake, Walker Lake, Blanche Lake, Deer Lake, Round Lake, Pelican Bay and northern Otter Tail River

Now accepting online payments for:

- Annual Membership • Worm Spraying
- Foundation Donations

MEMBERSHIP APPLICATION

Otter Tail Lakes Property Owners Association Inc.

2021 Membership (Check one)

Property Owner Member: _____ **Associate Member:** _____
(Owners Lake Property) (Does not own lake property or shares ownership)

Name of Property Owner living at lake property address: _____

Address of Property _____ House/Street # _____
(this is the blue house number/street for your lake home) City/State Zip _____

Summer "mailing" address (5/15 – 8/30): _____ House/Street # _____
(must be valid US Postal deliverable address) City/State Zip _____

Winter mailing address (9/1-5/15): _____ House/Street # _____
City/State Zip _____

Email: (please print legibly) _____
Notification of date for tent caterpillar/worm spraying, updates of possible lake changing issues, etc. (If you don't personally have an email address, you can substitute one for a family member who will let you know of these notifications).

Annual Dues (Jan.-Dec.)

- **Membership \$25.00**
- **Foundation \$10.00**
- **Worm Payment \$30.00**

Includes \$10 donation to OTLPOA Foundation \$ **65.00**

Additional support for the Foundation (tax deductible)

\$10.00 _____ **\$20.00** _____ **\$50.00** _____ **Other** _____ \$ _____

The OTLPOA Foundation was established to obtain financial resources to maintain water quality for recreation, fishing, and enjoyment when Government resources are not provided.

(Total enclosed) \$ _____

Make check payable to: OTLPOA and mail to: PO Box 21, Battle Lake, MN 56515
Or visit www.OTLPOA.com to pay by credit card (under the membership section)

How can the association better serve you? (On another sheet of paper)

What lake related topic or issue is most important to you? How do you think our Association can help?



MARK YOUR CALENDAR

2021 Upcoming Board Meetings

May 27 • June 24 • July 22 • Aug. 26
Sept. 23 • Oct. 28

7pm • Ottertail Community Center (103 Lake Ave. S)

Annual Meeting June 26th

www.otlpoa.com

What does a membership include?

- ★ Five issues of Lakeshore News
- ★ Lakeshore directory that is published every two years
- ★ Continental breakfast at the Annual Meetings
- ★ Representation at Minnesota Lakes and Rivers and Coalition of Lake Associations (which includes water testing of our lakes)
- ★ Establishment of AIS monitoring system (ILIDS)

OTLPOA FOUNDATION PURPOSE AND ACTIVITIES

The Ottertail Lake Property Owners Association Foundation was created as a supporting organization to OTLPA. The OTLPOA preferred this method of securing funds instead of other forms such as LIDS. (Lake improvement districts)

Foundation Looks for opportunities to protect and preserve our lakes and rivers.

In the event of a catastrophe, The OTLPA needs funds to assist in controlling a problem.
(Examples: Milfoil harvesting, spraying, treating areas within a lake area)

Providing swimming lessons to member's children.

Partnering with DNR with their watercraft inspectors.

Hiring 2 of our own watercraft inspectors.

Installing I-Lids (Cameras at accesses on Ottertail Lake) through a pilot program with Ottertail County Land and Recourse.

Supporting AIS control.

Supporting efforts to maintain property values for our members.

Education material.

Otter Tail Lake's Property Owner's Assoc. Inc. Board Meeting Minutes

Oct. 29th 2020 7:00 PM

CALL TO ORDER/ROLL CALL

Meeting was called to order by President Anderson Members present: Kemling, Hunke, Feters, Cave, Bope, Simdorn, and Gerken. Absent: Gedde, Wentz, Mouritsen, Rizk, Overturf, Ness, Snyder

Approval of Agenda - Motion approved unanimously as distributed

Approval of Minutes - Motion approved unanimously as distributed

Approval of Bills - Motion approved unanimously as distributed

Presidents Report - Introduction of Rick Anderson to discuss our concerns and thoughts on Lakeshore News going forward. He suggested we should have an April edition, nothing was decided at this time. He will attend our meetings and will send info to secretary regarding when info is needed by to be in Lakeshore News. The contract for Lake Shore news/Midweek had been approved at an earlier meeting. Rick will send contract to Roger to be signed.

Committee Reports

Membership - Currently 1,045 members as of Sept. meeting

Auditing/Finance - 2021 Budget will be completed and will be forwarded to all board members. Audit and budget will meet before Nov. 1 8th to review both.

DNR/GOV'T - Lynn discussed the canal that runs between Ottertail Lake and Long Lake

Water Testing/COLA - Nothing at this time

Communications -

Website - Rob reported the new links that will be added to our website.

Lakeshore News -

Worm - It is now possible to pay worm spraying on line, Rob is updating website for this

Foundation - Nothing at this time

Rearing Pond - Rob passed out updates and info on Rearing Pond grand opening.

Social - Nothing to report

Old business - Motion made and approved for treasurer to pay bills over the winter up to 500.00

New business - Donations approved for OT Rescue, BL Fire/Rescue - 1,500.00 1,000.00 To U of M AIS Research

Adjournment - Meeting was adjourned at 8:10PM **Next meeting April 2021**

Fergus
**HOME &
HARDWARE**

**WE ARE YOUR
HOMETOWN HOME
CENTER!**

1005 N. Tower Rd. • Fergus Falls, MN, 56537



**Appliances & Service
Cabinets/Counter Tops
Flooring • Fireplaces
Hardware • Lighting
Furniture • Mattresses
Paint & Supplies
Pet & Farm
Grills/Smokers • Skate Shop
Window Treatments & More!**

**We offer Curbside/Pick Up, Walk-ins
and Delivery Services**



HARDWARE



GRILLS



FURNITURE



APPLIANCES



FLOORING

218-998-5070

Shop Online at:
www.fergushomeandhardware.com



Carr's Tree Service

FOR ALL YOUR TREE SERVICE NEEDS!

Over 40 Years In Business • Fully Insured

- Tree Removal • Trimming
- Stump Removal • Brush Mowing
- Lot Clearing • Emergency Service



**WE SERVE
THE LOCAL
AREA!**

COMMERCIAL & RESIDENTIAL

Call for FREE Estimates

218-367-3355 or 888-470-3355

Ottertail, MN • Email: carrsts@arvig.net

YOUR COMPLETE TREE SERVICE!

Always looking for good employees! Apply Today!

www.carrstreeservice.com

Updated Fishing Regulations

Some of the regulations in Otter Tail County lakes have changed this year. Here are some of the highlights on slot size and limits that you need to be aware of. Please refer to the Minnesota DNR website and download the complete pdf of the current regulations so you are up to date on changes (www.dnr.state.mn.us/regulations/fishing/index.html).

The following list may not be complete so please double check your lakes currents regulations. Have fun fishing and be safe on the water!

- **ANNIE BATTLE LAKE** including inlet to Molly Stark Lake and outlet to Blanche Lake (Otter Tail County) Use of gas and electric motors, underwater cameras, augers, and other electronic fish-finding devices is prohibited. Sunfish: possession limit five. Northern pike, largemouth and smallmouth bass: catch-and-release only. Crappie: possession limit five.
- **NEW—BASS LAKE** near Underwood (Otter Tail County) Sunfish: daily limit five.
- **BATTLE LAKE, WEST** (Otter Tail County) Northern pike: all from 24-36" must be immediately released. Possession limit three, only one over 36"
- **CLITHERALL LAKE** (Otter Tail County) Smallmouth bass: all from 14-20" must be immediately released. One over 20" allowed in possession.
- **NEW—DEER LAKE** including Otttertail River (Otter Tail County) Sunfish: daily limit ten.
- **EAST LOST LAKE** including Otttertail River (Otter Tail County) Sunfish: daily limit ten.
- **FISH LAKE** near Parkers Prairie (Otter Tail County) Sunfish: daily limit five.
- **FISH LAKE** near Weetown (Otter Tail County) Sunfish: daily limit five
- **FLADMARK LAKE** (Otter Tail County) Sunfish: possession limit 10. Northern pike, largemouth and smallmouth bass: catch-and-release only. Crappie: possession limit five.
- **FRANKLIN LAKE** (Otter Tail County) Crappie: minimum size limit 10". Possession limit five. Sunfish: daily limit five.
- **LIDA LAKES**, South and North, including Mud Lake (Otter Tail County) Crappie: minimum size limit is 11". Walleye: all from 17-26" must be immediately released. One over 26" allowed in possession.
- **LITTLE MCDONALD LAKE** including Kerbs Lake (Otter Tail County) Walleye: all from 17-26" must be immediately released. One over 26" allowed in possession.
- **LONG LAKE** near Vergas (Otter Tail County) Sunfish: daily limit 10.
- **MIDDLE LAKE** (Otter Tail County) Largemouth bass: all from 12-20" must be immediately released. One over 20" allowed in possession.
- **NORTH TURTLE LAKE** (Otter Tail County) Largemouth and smallmouth bass: all from 14-20" must be immediately released. One over 20" allowed in possession. Crappie: minimum size limit 10".

- **NORWAY LAKE** (Otter Tail County) Largemouth and smallmouth bass: all from 14-20" must be immediately released. One over 20" allowed in possession. Crappie: minimum size limit 10". Possession limit five. Sunfish: possession limit five.
- **OTTER TAIL LAKE** (Otter Tail County) Northern pike: minimum size limit 30". Possession limit one.
- **OTTER TAIL RIVER** (Otter Tail, Becker, and Wilkin counties) Smallmouth bass: catch- and-release from Wilkin County Road 19 crossing upstream to the Friberg Dam including all impoundments, and from Otter Tail County Highway 51 upstream to the Hubbel Pond Dam including Mud, Rice, and Town lakes.
- **PINE LAKE, BIG AND LITTLE** (Otter Tail County) Walleye: all from 18-26" must be immediately released. One over 26" allowed in possession.
- **PRAIRIE LAKE** (Otter Tail County) Sunfish: daily limit 10.
- **RED RIVER LAKE** (Otter Tail County) Sunfish: daily limit 10.
- **SEWELL LAKE** (Otter Tail County) Largemouth and smallmouth bass: all from 14-20" must be immediately released. One over 20" allowed in possession.
- **STAR LAKE** (Otter Tail County) Sunfish: possession limit 10.
- **STUART LAKE** (Otter Tail County) Crappie: minimum size limit 10". Sunfish: daily limit 10.
- **TEN MILE LAKE**, North and South (Otter Tail County) Largemouth and smallmouth bass: all from 14-20" must be immediately released. One over 20" allowed in possession.
- **TWENTY ONE LAKE** (Otter Tail County) Sunfish: possession limit 10. Northern pike, largemouth and smallmouth bass: catch-and-release only. Crappie: possession limit five.
- **VENSTROM LAKE** (Otter Tail County) Crappie: minimum size limit 11". walleye: all from 17-26" must be immediately released. One over 26" allowed in possession.
- **WALL LAKE** (Otter Tail County) Sunfish: daily limit 10.
- **WEST LOST LAKE** (Otter Tail County) Sunfish: daily limit 10.
- **NEW—WEST SILENT LAKE** (Otter Tail County) Sunfish: daily limit five.

How many fish can I keep?

- Your daily and possession limits are the same unless otherwise noted. Some lakes have reduced daily limits but statewide possession limits which means an angler can keep one limit per day from that lake but can't exceed the statewide possession limit at any time.
- A fish is in your possession once you have caught and kept it. Your possession limit includes any fish

you have kept that day plus any fish in storage from a previous day.

- Processed fish still counts towards your limit.
- Once you reach your daily or possession limit for a species, you may keep fishing but all fish of that species must be immediately released.
- Culling is allowed in most waters except North Dakota border waters and Mille Lacs (except bass may be culled), until you reach your daily or possession limit.

What are length limits?

Some waters have fish length restrictions, such as slot limits, that require fish to be immediately released if they are not within a certain size range. There also can be maximum size limits or minimum size limits.

You can't possess any fish outside the legal length limits of the waters on which you are traveling or fishing, unless all of the following conditions are true:

- The fish was legally taken from a connected water body or packaged by a licensed fish packer;
- You are traveling back to your lodging or docking and taking the most direct route; and
- You are not fishing while you are in transit.

What if I've caught fish on waters with size restrictions different from statewide regulations?

Unless you are in the act of preparing the fish for a meal, any kept fish with size restrictions different than statewide regulations may not be filleted. Kept fish must still have their heads, tails, fins, and skin intact so they can be measured and counted.

You may eat legal sized fish while on the ice, docked, or moored to shore but you must retain the carcass including the head dorsal fin and tail. Any fish caught and eaten on the same day count toward your daily limit.

Can I give away fish that I've kept?

If you have kept a fish and want to transfer it as a gift, it must be accompanied by a receipt that must remain with the gift. The person receiving the gift can't possess more than the statewide limit including your gift. The receipt must contain all of the following information:

- Name and address of the owner.
- Name and address of recipient.
- Date of transfer.
- Description of the gift (number and species).
- License number (DNR number or transaction number) under which the fish were taken.

One of the best ways to transport your fish so they can be counted and identified is in clear plastic freezer bags. Fillets and dressed fish must show at least a 1-inch square patch of skin with scales so fish species can be identified.



Lic. BC520694

218-640-3713
Battle Lake, MN
www.daveerwinconstruction.com

Dave Erwin Construction is a trusted and licensed contractor serving the Battle Lake, MN and surrounding area. We offer upscale construction services and unbeatable customer satisfaction.

Distinctive Homes. Distinctive Values



LOST & FOUND

Have you lost something? Have you found something in your yard or on your shoreline that wasn't yours? If you have been unable to locate your lost items, or unable to return a found item to the rightful owner, email photo or description to secretary@otlpoa.com

WWW.OTLPOA.COM





Dave ERWIN
CONSTRUCTION, INC.
"Distinctive Homes. Distinctive Values"
218-640-3713
Lic.#20520694



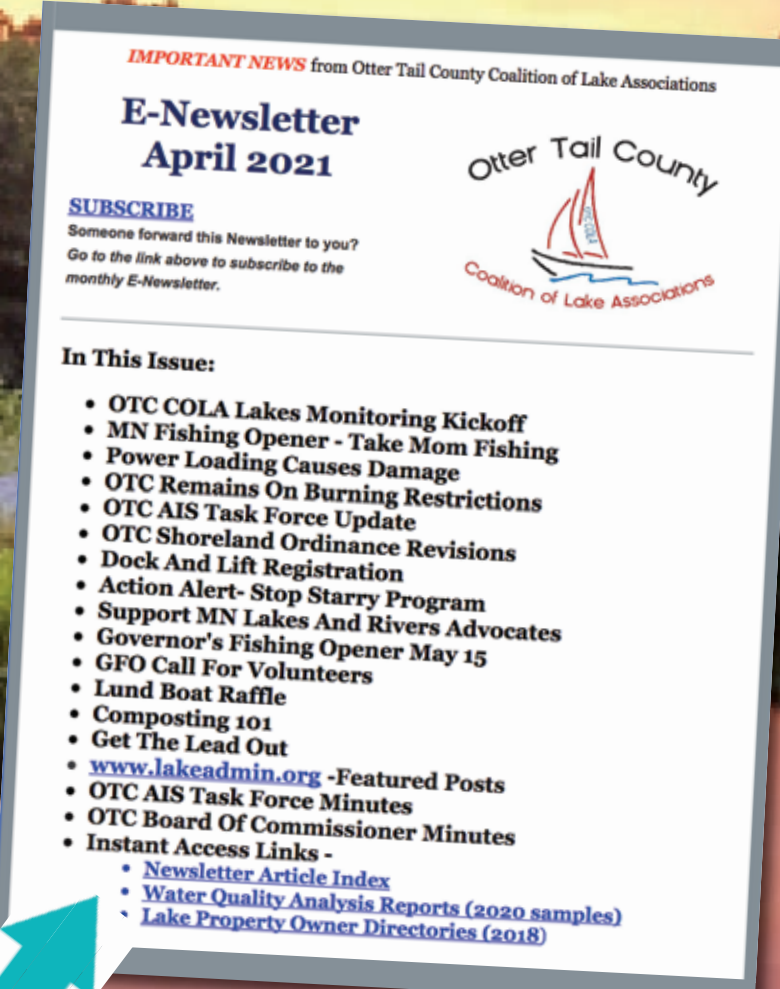
ONE GREAT TEAM
Same Great People. Same Great Service Now as
Otter Tail Real Estate

 John Good, Broker 218-731-0000 john@lakesfamilyres.com	 Cindy Thernell, Assoc. Broker 218-731-6316 cindy1@ottertailres.com	 Mark Stortroen, Assoc. Broker GRI 218-731-6315 mark@ottertailres.com
 Scott Schauff, Realtor 218-731-2813 sschauff@prtcl.com	 Jon Goetz, Realtor 218-770-6509 jongoetz@yahoo.com	 Samuel Herzog, Realtor 218-205-3573 samuelphertzog@gmail.com
 Pat Schultz, Realtor 218-731-8795 pat@lakesfamilyres.com	 Chad Landmann, Realtor 218-731-8200 chad@lakesfamilyres.com	 Todd Eklund, Realtor 320-808-1005 todd@lakesfamilyres.com
 Roger Hahn, Realtor 218-671-3011 roger@lakesfamilyres.com	 Shana Zimmerman, Realtor 218-770-6936 shana@lakesfamilyres.com	 Craig Raguse, Realtor 218-205-0067 craig@lakesfamilyres.com
 David Zender, Realtor 218-205-0018 dzender@lakesfamilyres.com	 Luke Mostue, Realtor 218-671-8457 luke@lakesfamilyres.com	Providing a superior level of informed, professional & consistent real estate service to buyers & sellers in the lakes area!

www.lakesfamilyres.com
Follow us on Facebook
1811 E. Fir Ave., Fergus Falls • 218-739-4460

Otter Tail County Coalition of Lake Associations

Otter Tail County Coalition of Lake Associations membership is made up of 48 lake associations in Otter Tail County. Associations vary in their structure. Some associations are formed for single lakes. Others are formed to include two or more lakes, for example, Leaf Lakes Association includes East, Middle, and West Leaf Lakes. A third entity is the "Lake Improvement District" (LID) which is a special assessment district permitted by the County to tax its property owners to generate its funding. When you add the number of lakes these associations represent, they account for over 60 of the more than 1000 lakes in the County. But looking at it differently, the water area of these, the biggest lakes in the County, account for about 70% of the lake surface water area in the County. Also, individuals who share a common interest in the health of our lakes may be COLA members.



IMPORTANT NEWS from Otter Tail County Coalition of Lake Associations

E-Newsletter April 2021

SUBSCRIBE
Someone forward this Newsletter to you?
Go to the link above to subscribe to the monthly E-Newsletter.

In This Issue:

- OTC COLA Lakes Monitoring Kickoff
- MN Fishing Opener - Take Mom Fishing
- Power Loading Causes Damage
- OTC Remains On Burning Restrictions
- OTC AIS Task Force Update
- OTC Shoreland Ordinance Revisions
- Dock And Lift Registration
- Action Alert- Stop Starry Program
- Support MN Lakes And Rivers Advocates
- Governor's Fishing Opener May 15
- GFO Call For Volunteers
- Lund Boat Raffle
- Composting 101
- Get The Lead Out
- www.lakeadmin.org -Featured Posts
- OTC AIS Task Force Minutes
- OTC Board Of Commissioner Minutes
- Instant Access Links -
 - [Newsletter Article Index](#)
 - [Water Quality Analysis Reports \(2020 samples\)](#)
 - [Lake Property Owner Directories \(2018\)](#)

FIND OTC-COLA NEWSLETTERS ONLINE at
www.ottertailcountycola.org



BATTLE LAKE STANDARD

7 days a week
Hwy. 210 & 78, Battle Lake (218) 864-5221
www.battlelakestandard.com

- Convenience Store
- Full Service Station
- Outdoor Power Equipment




NESS BACKHOE, INC

- General Excavation
- State Certified Septic Systems
- Backhoes/Full Swing Backhoe
- Trucks • Skidsteers
- Loader • Dozer
- Snow Removal

218-747-2200
Cell: 218-770-5814

Tony Anderson, Owner/Operator
License # L3839 • Bonded and Insured
email: nessbackhoe@prtcl.com
11468 State Hwy. 78, Ashby, MN 56309



STOP AQUATIC HITCHHIKERS!™

Be A Good Steward.
Clean. Drain. Dry.

StopAquaticHitchhikers.org

Service

FOOD MARKET *serving you best!*

OPEN 7 Days A Week!

Cut to Order Meats Certified Angus Beef
Seafood and Freshwater Fish
Party Trays Meat & Cheese, Fruit & Veggie
Fresh Baked Bread and Cookies
Fruit & Gift Baskets
ONLINE SHOPPING AVAILABLE
www.servicefood.com

FULL SERVICE GROCERY STORE • LOCALLY OWNED & OPERATED
321 W. Lincoln Ave. • Fergus Falls • 218-998-9000



JBS BUILDERS, LLC
www.jbsbuildersllc.com
Jayson B. Storo, Owner
218-495-2005
218-232-0472
jaysonbs@live.com

No Job Too Big or Too Small
Remodeling • New Construction • Roofing & Siding • Decks
Additions • Windows & Doors • Kitchen & Bath Remodels

MN Lic. #BC637708






Otter Tail County reminds dock and lift buyers and sellers to register their equipment

April 15, 2021—Otter Tail County, MN —Otter Tail County's Dock and Riparian Use Ordinance requires docks and lifts to be registered with the county when being moved from one body of water to another. Minnesota law requires dock and lifts to be dried for 21 days before moving from one body of water to another.

Spencer McGrew, Otter Tail County's Aquatic Invasive Species Specialist said, "We recently computerized the dock and lift registry. Members of the public can now register their equipment from the comfort of their couch."

The Dock and Lift Registry is designed to raise awareness about the 21-day dry time for docks and lifts. Docks and lifts can harbor adult zebra mussels, which are a serious aquatic invasive species. The mussels secrete a powerful adhesive to attach themselves to hard objects, including docks and lifts. They can also survive being dry for extended periods, closing their shells and 'holding their breath'. The 21-day dry time is designed to kill zebra mussels that otherwise might hitch a ride from one lake to another on a dock or boatlift.

Dock and lift owners can register their equipment by calling 218-998-8113 or by registering it online at onegov.co.ottertail.mn.us/

"As people upgrade their equipment and think about selling their old dock or lift, it is important to clean, drain, and dry them for 21 days" McGrew continued.

About Otter Tail County Aquatic Invasive Species Task Force

It is the Mission of the Otter Tail County Aquatic Invasive Species Task Force to develop programs and strategies to support and enhance the protection of Otter Tail County waters. In order to accomplish this, the Task Force will promote public awareness, education, containment, research and provide recommendations to the Otter Tail County Board of Commissioners.

Contact: Spencer McGrew, Aquatic Invasive Species Specialist Land & Resource Management, smcgrew@co.ottertail.mn.us, 218-998-8113



**Lake Area
Docks & Lifts**

WWW.LAKEAREADOCKS.COM

WE'RE YOUR NEIGHBORS AT THE LAKE!



23156 CO HWY 1 | FERGUS FALLS | 218-998-5400

1200 N BROADWAY (HWY 59) | PELICAN RAPIDS | 218-863-1833

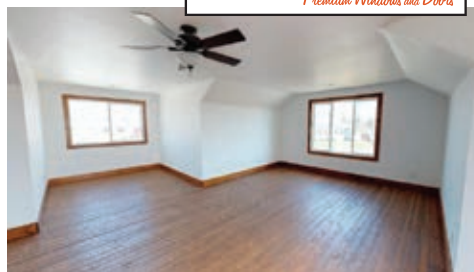
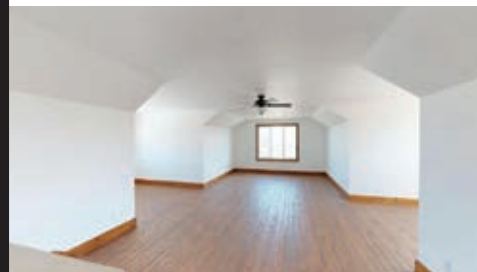
106 MEMORY LANE (HWY 210 W) | BATTLE LAKE | 218-862-3625



The Haven

**Endless Options for
Living, Storage &
Recreational Space**

**MODEL
ON DISPLAY**



**MERICKEL LUMBER
& DESIGN CENTER**

218-631-3570

800-225-3570

M-F 7:30-5 • Sat. 7:30-12

Hwy. 10 West • Wadena, MN 56482

www.MerickelLumber.com

SHOPPING FOR TREES

Bev Johnson Master Gardener

Bunkey has been staring out his living room window all winter. There is a bare spot that is really bugging him. It needs a shade tree; maybe two so he can hang a hammock between them, eventually. He's in luck if he wants to get a bare root tree. Early in the spring is the only time they are available. As you might suspect, a bare root tree has no soil around it. It's bare. These trees and shrubs are harvested in the fall by undercutting their roots, lifting the plants then removing all the soil from the root system. They are then stored over winter in a climate-controlled facility where the temperatures are slightly above freezing, and the humidity is 95 to 99 percent. This keeps the plants dormant but moist so the roots don't dry out. The advantage of buying a bare root tree is that they are considerably cheaper than either a B&B or potted or container tree. They are a bargain if you want to plant a windrow or a hedge. They are usually smaller than the other three but will catch up in several years. The disadvantage is that unless they are carefully cared for in the sales setting, never letting the roots dry out, they may not live. Another problem is that they need to be planted the day you bring them home, or very soon after. If the ground is frozen, or the roots dry out, even in your car, plan a funeral.

B&B means balled and burlap. These trees are grown in the ground then dug carefully without disturbing the root ball, and that is promptly wrapped in burlap. In a larger tree, it may also be in a metal basket. This system keeps the roots properly spread out. The roots must be kept moist. Don't dump one in your pickup and drive home at 60 MPH. Bring an old carpet or tarp to wrap around as much of the tree as possible. The advantage to B&B trees is that you get the soil with all the attending microbes and fungus in it. This makes for faster rooting. You can plant a B&B tree or shrub in the spring, early summer or early fall. You can get a tree as tall as 20 feet for instant landscaping. The disadvantage is the weight of the tree or shrub. You will need a professional to plant this monster and it will not grow for several years as it needs to replace the feeder roots that have been removed. And, if not properly planted and cared for, may well need an undertaker next spring.

Container grown trees and shrubs are what most gardeners look for. They can be in pots from 1 gallon size up to 25 gallons. They are usually planted in a soilless mix. This makes them lighter for the nurseries and Bunkey to handle, although if a tree is in a 25-gallon pot, you better plan on getting a cart to move it. These plants have spent most of their lives in a pot. The exception is when a nursery pots up bare root tree in early summer. These should be labeled as potted plants. The roots aren't well established in the potting mix. If it is container grown, it will have very dense roots. Dump the plant out of the pot, loosen the soil and remove any circling, or broken roots. Spread the roots out as far as possible when planting. Water the spot out of newly planted trees; for the next 5 years unless we get an inch of rain that week.



**306 N. Tower Rd.,
Fergus Falls**

**Mon.-Fri. 8am-7pm
Sat. 8am-5pm**

218-998-3373

www.premiermeatsandseafood.com

Get Ready For Summer Grilling!

**Burgers • Brats • Fresh Seafood
Meat & Cheese Trays • Ham
Deli Salads • Fresh Buns**



Turn in Poachers (TIP)

- To report a violation immediately,
24 hours a day, 365 days a year, call toll-free 1-800-652-9093
or key in #TIP on your cell phone.
- To report a violation that isn't time sensitive, use the
www.dnr.state.mn.us/enforcement/tipreporting.html



How To Get Rid Of Mosquitoes

Mosquitoes may be the least welcome of common pests. They make irritating, high-pitched noises, cause painful bites that leave itchy welts and, in some cases, can transmit serious diseases. This guide will teach you how to get rid of mosquitoes in and around your home as well as offer tips for staying unbiten.

What Are the Dangers of Mosquitoes?

Mosquitoes are small, flying insects with segmented bodies. They feed by biting people or host animals and drawing minute amounts of blood, leaving saliva that can cause an itchy rash on the skin.

- The most serious risk from a mosquito bite is that it can ingest pathogens and transfer them to another host, leading to the spread of infectious diseases such as malaria, yellow fever and other viruses. Not all mosquitoes carry the same diseases.
- With rare exceptions such as Iceland, mosquitoes can be found worldwide, although they're more active in warm or tropical climates.
- Mosquito larvae develop in water, so adult mosquitoes are attracted to damp soil or standing water to lay their eggs. Any source of standing water may contain mosquito larvae, including old tires, flower pots, gutters that drain improperly, birdbaths and water features such as fish ponds.
- Some studies suggest that hungry mosquitoes are attracted by the carbon dioxide given off by people and other potential food sources.
- Mosquitoes tend to be most active at dawn and dusk.



How to Get Rid of Mosquitoes in the House

When determining how to get rid of mosquitoes in the house, check under sinks, in closets, under furniture or in the laundry room. Mosquitoes like to rest in dark, humid places. If you confirm that you have a mosquito population in your home, get rid of them with indoor-tested products.

- EPA-registered indoor flying insect and mosquito repellents are available in fogger, aerosol or pump spray form.
- Fans and fly swatters are low-tech solutions that can deter and eliminate mosquitoes.
- Keep mosquitoes from entering your home by repairing or replacing any damaged window screens. Add a screen door to outside doors and screen in outdoor porches, pergolas and patios.
- If mosquitoes persist in your home, call a pest control expert.

Tip: Consider using mosquito netting around your bed to help you sleep during a lasting infestation.

How to Get Rid of Mosquitoes Outdoors

Mosquitoes rest in dark, humid outdoor areas, such as in tall grass, hollow trees or under leaves. If mosquitoes swarm around your house, treat areas under and around patio furniture, in carports or in the garage. Don't forget to check and treat outdoor storage sheds.

- When using chemical treatments, adhere to all manufacturer safety guidelines and recommendations.
- Larvicides eliminate mosquitoes before they become adults.
- EPA-registered mosquito sprays and foggers formulated for the outdoors spread toxins that will eliminate the pests.
- Use citronella torches or candles to keep bugs away from small areas outside, such as a porch or deck.
- Fans can blow winds strong enough to disperse mosquitoes outdoors.
- Electrocuters, or mosquito zappers, use heat and carbon dioxide to attract and kill mosquitoes.
- High-tech mosquito traps use a combination of heat and scent to imitate a human target and attract mosquitoes. When a mosquito flies in for a closer look, a built-in vacuum draws them into a chamber where they are trapped and eliminated.



Open 7 Days
A Week

FREE Notary
Service

Boll Realty is here to help serve you, by making your home and property dreams a reality!

#1 FOR
45 Years
SELLING
On Otter Tail!

LAKESHORE SPECIALISTS

Cathy Mueller, Broker, Owner • 218-205-6309

Laurie Woessner, Agent • 218-639-1825

Tom O'Brien, Agent • 218-849-7831

Gloria Hedstrom, Agent • 218-205-6474

David Wieser, Agent • 218-205-1970

Chad Bryniarski, Agent • 218-640-3068

Phyllis Tysver, Agent • 218-308-3775



217 Hwy. 78 N, Ottertail, MN • 218-367-2716
boll@arvig.net • BOLLREALTY.COM



scott
BUCHHOLZ
Construction

Serving the Lakes
area for over 25 years

218-770-0513

CUSTOM REMODEL
NEW CONSTRUCTION
GENERAL CONTRACTOR

scottbuchholzconstruction.com
sm5buchholz@arvig.net

Lic. #BC20024416

BROGARD PLUMBING

HEATING & EXCAVATING

HENNING • 218-583-2041

Swimming Lessons Taught by YMCA Instructors

Swimming lessons will meet five times for 45 minutes each time. (Preschool lessons are 30 minuteseach.) Instruc- tors will not have much time between lessons, so swimmers are asked to be ready tobegin their lesson immediately at their start time. Parents are encouraged to stay and watchlessons. If parents leave the swimming area during lessons, they are asked to be back promptly atthe end of the lesson. Instructors will not be able to supervise swimmers in the water who are notin a lesson. Swimming lessons meet regardless of weather. If it is unsafe to swim due to weather,safety skills will be taught in the shelter located near each beach.

Cost: \$57 Levels 1-6 (5 lessons of 45 minutes).
Cost: \$45 Preschool (5 lessons of 30 minutes).
Locations: Ottertail Lake at Amor Park Beach and West Battle Lake across from Lions Park inBattle Lake

Advance registrations only. No registrations at the beach.
Preschool (approximate ages 2 1/2 to 5 years): Learn water adjustment skills, front and back float.Learn to move in the water on front and back. Learn to be comfortable in the water. Lessons meetMonday through Friday, five lessons of 30 minutes each. Limited enrollment; register early.

Level 1: Introduction to Water Skills (approximate ages 5-7): This level is ideal for the child who hasnot had previous swim instruction or is unable or uncomfortable with putting their entire face inthe water. The purpose of this level is for students to become more comfortable in the water.Students will become proficient in skills such as entering and exiting the water safely, submergingentire face, using a life jacket, and beginning front and back float.

Level 2: Fundamental Aquatic Skills (approximate ages 7 & 8): This level is ideal for the child who isable to put their face in the water but is unable to independently float on their front and back. Thepurpose of this level is for students to begin to develop fundamental water skills. In this level,students will learn to swim unaided 15 feet on either their front or back as well as entering thewater by jumping or stepping from the side, treading water, roll over from back to front and front toback.

Level 3: Stroke Development (approximate ages 8 & 9): In this level, students will continue to buildon the fundamentals learned in the previous levels. The skills mastered in this level include rotarybreathing, front and back crawl, butterfly kick and body motion, standing or kneeling dive, survivalfloat, tread water for 30 seconds, as well as emergency situation Check Call Care.

Level 4: Stroke Improvement (approximate ages 9 & 10): In this level, students develop confidencein the skills learned in previous levels as well as improve other aquatic skills. The skills mastered inthis level include swimming 25 yards of front and back crawl as well as 15 yards of butterfly,breaststroke, and elementary backstroke. In addition to these skills, water safety will also beimplemented through the learning of a throwing assist, safe diving rules, and how to care for achoking victim.

Level 5: Stroke Refinement (approximate ages 9-12): In this level, students will further coordinateand refine skills they have learned in past levels. Students will master the following skills: front andback crawl, sidestroke, breaststroke, front flip turn, and elementary backstroke.

Level 6: Swimming and Skill Proficiency (approximate ages 11-13): In this level, students will focuson endurance and stroke technique. The purpose of this level is for students to refine strokes andbe able to swim with ease, efficiency, power and effectiveness over great distances. Some skills forlifeguarding and fitness will be taught.



Red Cross Swimming Lessons
Fergus Falls Area Family YMCA Staff

Please check one in the column below and please circle the level.

July 5-9: Ottertail Lake, Amor Park
___ 3:15-4:00pm Level 1 3 5
___ 4:05-4:50pm Level 2 4
___ 4:05-4:35pm Level Preschool

July 12-16: Ottertail Lake, Amor Park
___ 3:15-4:00pm Level 1 2 3 5
___ 4:05-4:50pm Level 1 4 6
___ 4:05-4:35pm Level Preschool

July 19-23 West Battle Lake
___ 3:15-4:00pm Level 1 2 3 5
___ 4:05-4:50pm Level 2 4 6
___ 4:05-4:35pm Level Preschool

July 26-30 West Battle Lake
___ 1:00-1:45pm Level 1 3 5
___ 1:50-2:35pm Level 2 4 6
___ 2:50-3:35pm Level 1 3 4
___ 3:50-4:35pm Level 1 2
___ 3:50-4:20pm Level Preschool

Name _____ Age _____

Address _____

Email _____

Emergency Contact Information

Parent _____ Cell _____
work _____

2nd Contact _____ Cell _____
work _____

Please attach payment. Checks can be made payable to Battle Lake Community Education and mailed to Battle Lake Community Education, 402 W. Summit, Battle Lake, MN 56515.

YMCA staff and Battle Lake Public School will take every step possible to provide adequate supervision. However, as with any physical activity, there is a certain amount of risk of injury. The participating individual, parent, or guardian agrees not to hold the YMCA, Battle Lake School, employees, contractors, and volunteers responsible for claims resulting from training, attendance in, or participation in swimming lessons.

Parent/Guardian Signature _____ Date _____

Questions regarding location or registration, please call Tanya at 218-862-4603.
Questions about specific swimming skills and placement in class, please contact Taylor at 218-739-4489 ext. 211.

Registration Fee: \$57.00
(Preschool lessons are \$45.00

NO REGISTRATIONS AT THE BEACH.
PLEASE REGISTER IN ADVANCE.

*Ottertail Lake lessons are at Amor Park
*West Battle Lake lessons are across from Lions Park in Battle Lake



"Selling Lake Property in Otter Tail County Since 1995!"



Mohagen Real Estate

www.mohagenrealestate.com

Office: 218-998-4400
Cell: 218-731-7376



Equal Housing Opportunity MLS

K&S Carpet Cleaners & RESTORATION

"The Healthiest Home Improvement You'll Ever Make"

Since 1986
Josh Solberg - Owner

www.kscarpet.com

Experience The Most Modern Concept In Carpet Cleaning Water Damage Clean Up Experts

Fergus Falls: 218-736-2598
Ottertail: 218-367-2598
Perham: 218-346-2598

VISA DISCOVER NOVUS MasterCard AMERICAN EXPRESS

Lake Homes, Boats, Camper Cleaning

We do coronavirus site clean up

\$119⁹⁵

House Special

living room, hallway,
2 BR traffic areas

Offer not good with any other offer or discounts.
Expires July 19, 2021.

Up to 425 sq. ft.

\$60⁰⁰ off

Air Duct Cleaning & Sanitizing

Offer not good with any other offer or discounts.
Expires July 19, 2021.

THE WORLD'S #1 SELLING FARM TRACTOR



2021 Mahindra EMAX 20S HST
20 hp, 4WD, Cab, Heat, Ldr., SN# 19HRP06248
\$16,500



2021 Mahindra EMAX 25 L
25 hp, 4WD, Cab, Heat, Ldr., SN# 25HRP05129
\$20,500



2021 Mahindra 8100 Power Shuttle
100 hp, 4WD, Cab, AC/HT, Ldr., SN# KNJCY-1174
\$59,500



2020 Mahindra EMAX 20S HST
20 hp, 4WD, Ldr.
\$13,500



2021 Mahindra 2665 Shuttle
65 hp, 4WD, Cab, AC/HT, Ldr., SN# 65GCM01925
\$41,900

Over a Century of Service (1913- 2021)
(701) 642-9129
www.lillegardinc.com
WE CAN SHIP!

No ReGeneration, No DPF, 7 Year Warranty

Lillegard Inc.
17851 Hwy. 13 West • Wahpeton, ND
(701) 642-9129 • www.lillegardinc.com

Mahindra Rise.
*With approved credit. Program restrictions may apply. See dealer for details.

VISIT OUR WEBSITE:
www.otlpoa.com

LAND TRANSFERS April 1 through May 6, 2021					
TWP	LAKE NAME	PROPERTY TYPE	GRANTOR	GRANTEE	SALE PRICE
EVERTS	SILVER 3RD	SEASONAL RES REC	HERRINGTON,NATHAN & MELANIE	CARLSON,JESSICA & TRAVIS	\$114,900
EVERTS	SILVER (EVERTS)	RESIDENTIAL	MCNAB,LEONARD & EILEEN	LARSON,KARLA F.	\$398,600
EVERTS	SILVER (EVERTS)	SEASONAL RES REC	MYKLESTAD,ROGER A	CANNADY,STACY J	\$325,000
EVERTS	SILVER (EVERTS)	SEASONAL RES REC	NEWBORG TRUPKA,GLORIA J / TRUPKA,EDWARD	MILLER,CHAD D. / MILLER,HEATHER A	\$130,000
EVERTS	SILVER 3RD	SEASONAL RES REC	WEST,ANDREW M. / KRASKY,LAURA E.	KOPPANG,KEVIN K. & JANE E.	\$100,100
AMOR	OTTERTAIL	SEASONAL RES REC	SHOBE,JOEL C & SUSAN M. S.	LAKES AREA PADDLE SPORTS, LLC	\$176,000
AMOR	OTTERTAIL	SEASONAL RES REC	LUNDEEN,MARY D	EGGE,STEVE & BONNIE	\$160,000
EVERTS	SILVER (EVERTS)	SEASONAL RES REC	NEITZKE,DAVID K & MARY L	TRUMBAUER,DARRELL & HELEN	\$81,000
GIRARD	E BATTLE	RESIDENTIAL	RONKEN,RONALD A	RONKEN,ERIK & LEIF	\$302,000
OTTER TAIL	OTTERTAIL	SEASONAL RES REC	MILLER,DOROTHY J	NAGLE,ELIZABETH	\$460,050
OTTER TAIL	OTTERTAIL	SEASONAL RES REC	TROFTGRUBEN,PAMELA K	28293 STATE HIGHWAY 78 LLC	\$455,000
OTTER TAIL	OTTERTAIL	RESIDENTIAL	MADSON,SCOTT F / HEITKAMP-MADSON,BET A	OTBR LLC / OTBR, INC	\$1,900,000

Don't Forget About The Basics.

By Ross Hagemeister / meisterguideservice.com / 218-760-0511

When I was 21 years old, I drove hurriedly home from Camp Lejeune, North Carolina, where I had been stationed. We had just returned home from Mogadishu, Somalia, and I was ready to begin my next life—my 4 years was up. Before I left, one of my company commanders asked why the heck I'd ever want to depart from the Marines? I told him I was going to be a fishing guide. He raised his eye brows in an unimpressive way. He obviously disagreed. I could tell he thought that I'd crash and burn and that I'd surely regret leaving the corps. After all, what can be better than toting machine guns on foreign dirt? I got home not long after that conversation. It had been more than 2 years since being back. It was strange....suddenly having freedom after not having a say about anything for so long. Realizing my free state, I bought my first boat with the money I saved while overseas. It was a Lund Predator and it had a 60 Mercury tiller on it. Soon after I bought the boat, I drew up business cards, dropped them off at bait shops and gas stations, and waited by the phone. That was my beginning.

I'm an old guy now. I'm nearly 49 years old but still guiding. That first Lund Boat carried me through my guide service's infancy and it was where I discovered how to adequately fish and guide. At the console stood a Garmen 45 hand held GPS, and next to it, a Clearwater Classic flasher unit. I memorized the bottom of Ottertail Lake with that flasher and tirelessly navigated mostly by sight and memory. The GPS didn't have a lake map behind the screen. It only displayed a square "dot" as a waypoint, and the rest was blank. Beyond the pin-pointing benefit of the GPS, there was no orientation. I could get to a spot but had to know the entire bottom of the lake because the dot didn't give any other assistance or description of the lake bottom. It was the actual act of fishing that gave me an acute idea how complex the bottom of the lake was.

After trolling bottom bouncers and Lindy Rigs for 1000's of miles during those early years, I learned where specific bottom features were like: weed lines, sand lines, clam beds, and depth inconsistencies.....all by feel. I developed a clear understanding of the relationships between the walleye and its food sources during each spring, summer and fall season. I used my trolling and presentations as probes as much as I used them for catching fish. It was the golden time to learn about lakes, the fish, and how to fish creatively and instinctively—there was no other way. I guided for 8 years before I put a graph in my boat. I didn't care for liquid crystal graphs because they were too slow. I could read fish and bottom content better and more quickly with my flasher units. Nor did I buy graphs for GPS reasons. The technology wasn't there and I didn't want it. I was doing just fine with my hand-held models. I went through 4 different hand held GPS's because they didn't handle moisture well and every time the GPS would die, I would have to re-find all of my spots. It never bothered me because I just chalked it up to practice. Having to relocate spots forced me to learn the lake better and I often found myself discovering new areas while I was looking for the old ones.

Things are different now. Boats are bigger, heavier, prettier, faster. Trolling motors are automated, auto piloted, and automatically deploy! Graphs are larger than a TV set was in the 1980's, and most boats have more than one. The age of the anchor has past; boats have Talons or rods that stick the boat to the bottom of the lake or they have a GPS guided feature that jives with their bow mount trolling motor known as "Spot Lock." The trolling motor simply keeps the boat in a stationary position guided by GPS. There's nothing wrong with any of the new stuff, but there is something to be said about new methodology and how it has replaced instinctive fishing. All of that new stuff can be a short cut of sorts, and can make things more efficient, but don't forget that fish are just fish. They are amazingly tuned-in animals and they can be completely overthought. It's very difficult to outsmart an animal that has zero cognitive bases to anything it does.

Even though your boat might have a new graph, a hands off trolling motor, and an anchor designed as NASA, try to discover ways to apply minimal technologies into your fishing game. I find it vastly more important to thoroughly understand the fish and it's environment than understanding the software that was created by folks who may never had fished a walleye, northern pike, or a crappie. While your boat scopes, scans, and navigates a

predetermined depth that that you set it to roam at, the fish might actually need a specific weed type that grows and thrives at multiple depths. The boat's automation may actually steer you around those areas or they might put you right in the weeds too? Hard to say.

Don't forget the basics. Fish need what fish need. Convincing them to swallow the new best lure, dispensed by the finest reel, and governed/pushed/shoveled by a fishing chat-line guy that calls himself "superawesomewalleyeguy" are all ways to be steered off course. Remember that old fishing virtues still apply in this new fangled techno fishing age: be persistent (means time on water), create your own style and rhythm, work hard. If you're not catching fish, change locations rather than pushing more buttons on a 15 inch graph screen. It's physical. If you have fish when you get home, you should be tired. That's effort and energy spent. That's fishing.

Here's a little pre-opener insight. With the exception of shallow, dark-bottomed bays, the lakes have kept cold this spring. The cold water may have slowed the walleye spawn a bit, but didn't inhibit it all together. What does that mean? It means that even though April was chilly, windy, snowy and all-together sad, walleye most likely kept a little ahead of schedule with their spawn which means that there will be some walleye that will have an appetite by the opener. The ice came off Ottertail County lakes in late March so it's disappointing that the water wasn't able to keep warming. I've seen some shoreline activity on several lakes, but for the most part, shorelines have been absent of life. All in all, our quick leap into spring, and what looked to be an accelerated walleye spawn, has turned into a very average spring. Minnesotans are used to being weather challenged. We've seen it before and we'll see it again. In the very least, we can be grateful that, for now, there's no snow in the forecast for next Saturday! Fish where the shiner minnows are. In most cases they will be near the first drop part of most lakes or out in front of current areas on lakes. Good luck this opening weekend!

Own Your Own Storage Building!

Order Now To Lock In Material Pricing



2 sizes: 32x40x12 or 36x54x14

Includes

- Reinforced concrete floors
- basic electric
- low association fees

Upgrades available

- insulation package
- lighted ridgecap
- garage door opener

Convenient Location: Highway 78/ Co. Rd. 5 near Ottertail, MN.

INDIVIDUALLY OWNED & OPERATED

PERHAM MN



650 3rd Ave. SE,
Perham, MN 56573



Beth Madson, Realtor
ottertailbeth@gmail.com
320-808-6492

God's Acres

Visit

Community wellness for the body, mind and soul

RECREATION AND MEDITATION AREA

OPEN TO THE PUBLIC

ENTER THROUGH CHURCH PARKING LOT

Play and Picnic Areas - Walking Trails - Disc Golf

New Veteran and Family Tribute - Baseball - Soccer

Basketball - Pickleball - Horseshoes - Tetherball

Amor Drone Airport - GA GA Ball - Labyrinth

Volleyball - Prayer Garden - Community Garden

ZIONAMOR.ORG



Aquatic Invasive Species Curly-Leaf Pondweed



What is curly-leaf pondweed?

Curly-leaf pondweed is a non-native, invasive submersed aquatic plant that was first observed in Minnesota in about 1910.

How to identify it

Curly-leaf is similar in appearance to many native pondweeds commonly found in Minnesota waters. It can be distinguished from other pondweeds by its unique life cycle. It is generally

the first pondweed to come up in spring and dies in mid-summer. Leaves have undulating and finely serrated edges.

Why is it a problem?

In spring, curly-leaf pondweed can interfere with recreational and other uses of lakes and rivers by producing dense mats at the water's surface. Matted curly-leaf pondweed can displace native aquatic plants. In mid-summer, curly-leaf plants usually

die, and dying plants accumulate on shorelines.

Locally the Lake Lida, South Lida lakes are having significant problems with Curly-leaf pondweed. One property owner described it as Pea Soup and piles of weeds on docks after being pulled.

“Never seen it this bad, usually it starts in August, this year (2018) it started in June. In the calm bays (Curly Leaf Pond Weed) started a couple of years ago. It's gotten progressively worse. Couldn't swim on the fourth of July.” Stony Bar area resident Lake Lida chain.

The Lake Lida property owners association has been working with DNR to help improve the situation and they have been annually applying herbicide treatments to control the weeds. This comes at great expense having budgeted 15-\$20,000 for treatment. In 2021 the budget could go much higher to control this weed that can grow in deeper darker water and choke out the local weeds naturally in the lake.

It is important to follow all the guidelines in removing weeds from boats and trailers departing area lakes to stop the spread of invasive species whether it is zebra mussels or

invasive weeds.

It has been discovered in waters coming into Ottertail and there is a treatment plan in place and our association is following these developments.

Curly-leaf pondweed: Threat to Minnesota Waters Invasive species cause recreational, economic and ecological damage—changing how residents and visitors use and enjoy Minnesota waters. Curly-leaf pondweed impacts:

- Dense mats at the water's surface inhibit water recreational use.
- Overtakes habitat and out competes native aquatic plants, potentially lowering diversity.
- Provides unsuitable shelter, food, and nesting habitat for native animals.
- Midsummer die-offs can litter the shoreline with dead plants.
- Overtakes habitat and out competes native aquatic plants, potentially lowering diversity.
- Provides unsuitable shelter, food, and nesting habitat for native animals.

BAPTIST

Basswood Baptist Church B.G.C. 
38188 340th St., Richville, MN 56576
Bert Holmquist, Pastor—218-495-3800
Church—218-495-3771

Sunday School 9:30 am, refreshments following
Worship Service 10:45 am
Bible Study, Youth Group & Kids Club - Wednesday 7:00 pm
Ladies' Bible Study - 3rd Thursday
Men's Prayer Breakfast - 1st Saturday 7:00 am
Potluck Dinner - 2nd Sunday

First Baptist (ABC) - Battle Lake
“The Little Brown Church on the Hill”
Lynn Hansen, Pastor—651-485-7378
www.firstbaptistbattl lake.org
Sunday Worship 9:30 am
Fellowship & refreshments 10:30 am

BATTLE LAKE ALLIANCE

401 W. Gilbertson St., Battle Lake 
Derek Mansker, Pastor • Church—218-864-5539
Sunday Worship Service 10:00 am
Fellowship & refreshments after service
Find us on the web at battlelake.org

CATHOLIC

Father Leroy Schik, Pastor
Mass Times—218-864-5619
www.ollsj.org
St. James Catholic - Maine Township 
Saturday Mass 5:00 pm, October 1 - May 1
Saint Edwards - Henning 
Sunday Mass 8:30 am - October 1 - May 1
Our Lady of the Lake - Battle Lake 
Sunday Mass 10:30 am



Lakes Area Church Directory 2021



*Join
us in
worship!*

 Indicates Barrier-Free Access

LUTHERAN

Bethel Lutheran Church
Battle Lake Campus:
Meets at Lakes Area Community Center
112 West Main St., Battle Lake
218-862-4903
Sunday School 9:15 am
(no Sunday School during summer months)
Worship: 9:00 am & 10:30 am
Website: bethellutheran.church

First Lutheran - ELCA 
505 W. Holdt St., Battle Lake
Bradley Skogen, Pastor
blfirstlutheran.org
Church—218-864-5686
Coffee Fellowship: 9:00 am
Worship: 10:00 am
Communion 1st & 3rd Sundays


Sverdrup Lutheran Church 
PO Box 70
209 Southern Ave. E., Underwood
Tammy Jacobson, Pastor
Church—218-826-6919
Worship 9:00 am

Tingvold Lutheran Church
6 miles north of Underwood, Co. 1 & Co. 35
Martha Halls, Pastor
Church—218-826-6487
September 1-May 31: Service 11:00 am
Fellowship 10:00 am
June 1-August 31: Service 10:30 am
Fellowship 9:30 am

Zion Lutheran Church of Amor - ELCA
36051 Co. Hwy. 74, Amor
Hwy. 1 and 74, 10 miles north of Battle Lake
James Gronbeck, Pastor • Church - 218-495-2563
Email: zionamoroffice@prtel.com
Website: www.zionamor.org
Facebook - Zion Amor
YouTube - Zion Lutheran Amor

Sunday Worship Services 8:15 am and 10:00 am
Traditional Service 1st and 4th Sundays
Contemporary Service 2nd and 3rd Sundays (Praise Team)
Communion 1st and 3rd Sundays
Bible Study - Tuesday 10:00 am
Covid-19 social distancing protocol in place.
Services live streamed on Facebook and uploaded to YouTube.

METHODIST

Ottertail United Methodist Church 
104 Shores Drive, Ottertail
Rod Turnquist, Pastor
Church—218-367-2270
Worship 8:45 am
Coffee Fellowship following Worship

Richville United Methodist Church
130 SW 1st Ave., Richville
Rod Turnquist, Pastor
Church—218-346-5656
Worship 10:30 am
Coffee Fellowship following Worship 2nd & 4th Sunday

PRESBYTERIAN

Maine Presbyterian 
30761 Co. Hwy. 45, Maine Township
2 miles north of Phelps Mill
Tom Junkert, Pastor
Website: mainepresbyterianchurch.org
Church—218-495-2539
Summer - Worship 9:30 am (Thru August)
Coffee Fellowship following Worship Service
Winter - Worship 10:00 am

**SEASONAL UPDATE**

Water is available year-round at the park office and at yurts.

BATHROOM FACILITIES: Trail center restrooms are open year-round! Vault toilets in the park are open year-round. Facilities are wheelchair accessible.

ELECTRIC SITES:

One RV electric site is available Oct. 1 to May 1 by calling the park. All camper cabins have electricity.

RECREATION FACILITIES**Summer**

- Picnic Area, Molly Stark Lake - Includes picnic tables and shelter.
- Picnic Shelter, Open Shelter Located near Molly Stark Lake Available for rent by calling the park. Shelter has electricity and accommodates 100 people. Handicapped accessible.
- Canoe Access Carry-in access only.
- Golf Course Within 10 miles

2 Wildlife Observation Areas

1 observation area located on Battle Creek, the other is on Lake Emma. Binoculars and field guides available from the park office for free use.

PARK HIGHLIGHTS

- Cart-in Tent Camping
- Hiking
- Wildlife Observation
- Heritage Fishing/Large Panfish
- Canoeing on Chain of Lakes
- Sandy Swimming Beach
- Equipment Rentals Available

Nestled in the transition zone between prairie and hardwood forest, Glendalough offers a true respite from civilization. Crystal clear Annie Battle Lake is a 335-acre, non-motorized "Heritage Fishery" that provides a tranquil fishing experience second to none. Special regulations sustain a steady supply of large sunfish, crappie, and the occasional walleye for the frying pan, and large bass for the camera. Near the pristine shores of this lake are a cart-in campground and canoe-in campsites, all free from the traffic and noise of traditional drive-in camping.

Annie can also be the starting point for an exploration of the park by canoe or kayak on the connecting creeks. The restored historic Glendalough Lodge on the north side of the lake details the park's history as a private retreat and game farm for the Minneapolis Tribune.

Numerous hiking trails, including two interpretive trails, meander along five lakes, through rich woods and blooming prairies. Wildlife abounds year-round, and there are many observation decks along the trails. Trails are groomed in winter for skiing and snowshoeing. Picnicking and swimming is available on two sandy lakes.

Migrating monarchs should be highly visible along the Prairie Hill Trail from mid-August through Labor Day. Vehicle permits are required and can be purchased at the park. For more information, call the park at 218-864-0110.

VIRTUAL TOUR Take a panoramic virtual tour of Glendalough State Park. Peek inside the Glendalough Lodge, marvel at a vibrant prairie sunset, check out the unique canoe-in group campsite, and more. It's a great tool to help you plan your next trip to the park! Take the high speed panoramic tour or the low speed/accessible tour. www.dnr.state.mn.us/state_parks/glendalough click on the Panoramic Tour or the Snapshot Tour under Park Notes.

Hours: Best time to contact the park is:
Daily from 9am - 4pm

218-864-0110 • fax: 218-864-0587

email: glendalough.statepark@state.mn.us

25287 Whitetail Lane, Battle Lake, MN 56515

www.dnr.state.mn.us/state_parks/glendalough

From the town of Battle Lake, go 1.5 miles north on State Hwy. #78 and 1.8 miles east on Otter Tail Co. Hwy #16 to the park entrance.



EMERGENCY
ALERTS



HOUSEHOLD
INFO



MEDICAL
HISTORY



PET
INFO



Smart911
is the *New* CodeRED

Register now to receive local weather alerts & create a "Safety Profile" with information you want 9-1-1 to know in case of an emergency.

REGISTER TODAY!

ottertailcountymn.us/smart911

218-998-8067



**Quality Forest Products
Drafting & Design**

Hardware - Tools - Electrical
Plumbing - Dock Systems
Benjamin Moore Paint
& Cabot Stain



218-864-5983

www.evertslumber.com

**205 S. Lake Ave.,
Battle Lake, MN 56515**



M-F • 7:30am-5pm

Sat. • 7:30am-12pm

46049 St. Lawrence Dr, Perham



\$249,900

Move in Ready New Construction Home on 2.75 acres! 3-bedroom 2 bath one level home featuring Beam and Stone accented covered entry with Swing, Great Room with Open Floor Plan Living, Butcher Block Center Island with Breakfast Bar, Cozy Family Room with Whitewashed Pine Ceilings and Wainscoting, Tile Floors with In-Floor Heat, Alder Interior Doors, Decorative Lighting and Ceiling Fans, Owner's Suite with Private Bath and Feature Wall, Concrete Patio, Attached and Heated 2 Car Garage and More! See it Today!



\$44,900

Wonderful 10 Acre Lot with hardwoods and planted pine with stream running through it! Just off CO HWY 52 and near intersection of CO HWY 67 in Deer Creek Township. Currently Raw Land with an Easement for access. Fantastic opportunity to build your home in the woods or have your own hunting land. Hurry... this one may not last!

CENTURY 21

Atwood



Erin Olson
320.293.1123
erin.olson@c21atwood.com



Connie Caspers
701.640.3161
connie.caspers@c21atwood.com

**VACATION
ON THE HOUSE**

SELL YOUR HOME
WITH C21 ATWOOD AND WE WILL SEND
YOU A 7-NIGHT VACATION ON THE HOUSE*

*Limited time offer. While supplies last. Restrictions may apply.

**NEW At Jaeger's
Custom Order
Or Purchase Off
The Lot!**

**OLD HICKORY
BUILDINGS**

Jaeger Furniture

Store Hours:
Mon.-Fri. 9-6 • Sat. 9-5

Hwy. 210 E., Fergus Falls, MN • 739-4675 • www.jaegerfurniture.com

**BIRAK SHRINE CIRCUS
CANCELED FOR 2021**

As the Shrine philanthropy centers around the well-being of children, and with the name of safety in mind, we will not be having our Annual Birak Shrine Circus 2021 due to the COVID-19 restrictions.

Our Shrine Circus is mainly sponsored by small businesses in the area, we would like to thank each and everyone of you for your years of support. It is our hope that your business is able to rebound during these trying times. We are planning to have a circus in 2022.

Circus Chairman, Al Haiby • Circus Co-Chairman, Kenny Friese
Birak President, Jon Anderson



**SHARE YOUR PHOTOS
WITH LAKESHORE
NEWS!**

**Please submit to
amy@themidweek.com
with a brief description.**



Photo by Brooke

PROTECT YOUR WATERS!

- ☒ Clean
- ☒ Drain
- ☒ Dry

Stop invasive species in your wake. The **Stop Aquatic Hitchhikers** campaign empowers recreational users to stop the transport and spread of these harmful aquatic invasive species.

[LEARN MORE ABOUT US](#)

[HOW YOU CAN HELP](#)